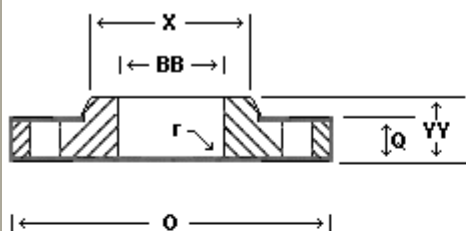
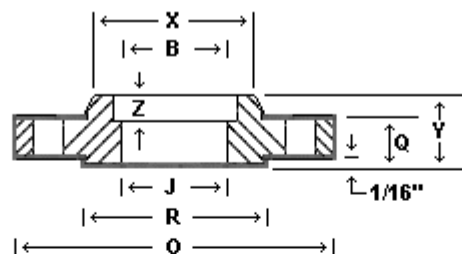




Dimensions for Class 300 Flanges



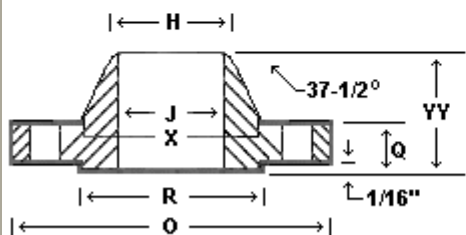
LAP JOINT



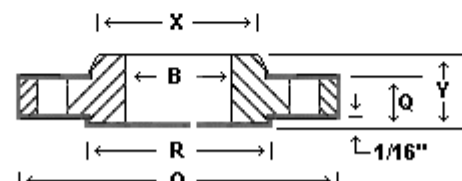
SOCKET



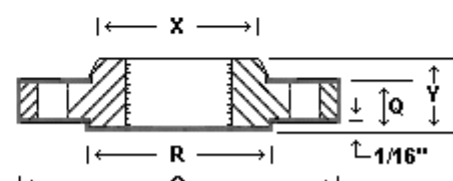
BLIND



WELDING NECK



SLIP ON



THREADED

Nom. Pipe Size (inches)	O	Q*	R	X	No. and** Dia of Bolt Holes	Bolt Circle Dia.	YY*	H	J	Y*	B	R	YV	BB	Z	C	T
1/2	3.75	0.56	1.38	1.50	4-0.62	2.62	2.06	0.84	0.62	0.88	0.88	0.12	0.88	0.90	0.38	0.93	0.62
3/4	4.62	0.62	1.69	1.88	4-0.75	3.25	2.25	1.05	0.82	1.00	1.09	0.12	1.00	1.11	0.44	1.14	0.62
1	4.88	0.69	2.00	2.12	4-0.75	3.50	2.44	1.32	1.05	1.06	1.36	0.12	1.06	1.38	0.50	1.41	0.69
1 1/4	5.25	0.75	2.50	2.50	4-0.75	3.88	2.56	1.66	1.38	1.06	1.70	0.19	1.06	1.72	0.56	1.75	0.81
1 1/2	6.12	0.81	2.88	2.75	4-0.88	4.50	2.69	1.90	1.61	1.19	1.95	0.25	1.19	1.97	0.62	1.99	0.88
2	6.50	0.88	3.62	3.31	8-0.75	5.00	2.75	2.38	2.07	1.31	2.44	0.31	1.31	2.46	0.69	2.50	1.12
2 1/2	7.50	1.00	4.12	3.94	8-0.88	5.88	3.00	2.88	2.47	1.50	2.94	0.31	1.50	2.97	0.75	3.00	1.25
3	8.25	1.12	5.00	4.62	8-0.88	6.62	3.12	3.50	3.07	1.69	3.57	0.38	1.69	3.60	0.81	3.63	1.25
3 1/2	9.00	1.19	5.50	5.25	8-0.88	7.25	3.19	4.00	3.55	1.75	4.07	0.38	1.75	4.10		4.13	1.44
4	10.00	1.25	6.19	5.75	8-0.88	7.88	3.38	4.50	4.03	1.88	4.57	0.44	1.88	4.60		4.63	1.44
5	11.00	1.38	7.31	7.00	8-0.88	9.25	3.88	5.56	5.05	2.00	5.66	0.44	2.00	5.69		5.69	1.69
6	12.50	1.44	8.50	8.12	12-0.88	10.62	3.88	6.63	6.07	2.06	6.72	0.50	2.06	6.75		6.75	1.81
8	15.00	1.62	10.62	10.25	12-1.00	13.00	4.38	8.63	7.98	2.44	8.72	0.50	2.44	8.75		8.75	2.00
10	17.50	1.88	12.75	12.62	16-1.12	15.25	4.62	10.75	10.02	2.62	10.88	0.50	3.75	10.92		10.88	2.19
12	20.50	2.00	15.00	14.75	16-1.25	17.75	5.12	12.75	12.00	2.88	12.88	0.50	4.00	12.92		12.94	2.38
14	23.00	2.12	16.25	16.75	20-1.25	20.25	5.62	14.00	To Be Specified by Purchaser	3.00	14.14	0.50	4.38	14.18		14.19	2.50
16	25.50	2.25	18.50	19.00	20-1.38	22.50	5.75	16.00		3.25	16.16	0.50	4.75	16.19		16.19	2.69
18	28.00	2.38	21.00	21.00	24-1.38	24.75	6.25	18.00		3.50	18.18	0.50	5.12	18.20		18.19	2.75
20	30.50	2.50	23.00	23.12	24-1.38	27.00	6.38	20.00		3.75	20.20	0.50	5.50	20.25		20.19	2.88
24	36.00	2.75	27.25	27.62	24-1.62	32.00	6.62	24.00		4.19	24.25	0.50	6.00	24.25		24.19	3.25

The following charts are for reference use only. They are based upon older piping systems. Refer to current specifications when designing new systems

Weight (L.B.S.)***								Flange Types	
Pressure Class	Nom. Size Pipe	Weld Neck	Slip-On	Thd.	Lap Joint	Blind	Socket	Thermometricscorp.com WELD NECK FLANGE	
300	1/2	2	1.5	1.5	1.5	2	3		
	3/4	3	2.5	2.5	2.5	3	3		
	1	4	3	3	3	4	3		
	1 1/4	5	4.5	4.5	4.5	6	4		
	1 1/2	7	6.5	6.5	6.5	7	6		
	2	8	7	7	7	8	7		
	2 1/2	12	10	10	10	12	10		
	3	18	13	14	14.5	16	13		
	3 1/2	20	16	16	16	21			
	4	26.5	23.5	24	24	28			
	5	36	29	31	26	37			
	6	45	36	36	38	48			
	8	69	56	56	55	79			
	10	100	77	80	88	122			
	12	142	113	110	139	183			
	14	206	159	164	184	241			
	16	249	210	220	234	315			
	18	306	253	280	305	414			
	20	369	307	325	375	515			
	24	579	490	490	530	800			

All dimensions given in inches.

Dimensions & tolerances in accordance with ANSI B16.5. Carbon steel flanges mechanical properties and chemistry conform to ASTM A105.

Flanges are furnished faced, drilled and spot faced or back faced.

\*1/16 in. raised face included in dimensions Q, Y and YY.

\*\*Bolt hole diameter 1/8 in. larger than bolt diameter.

\*\*\*Weights listed are approximate values.

\*\*\*\* To be specified by the customer.

